



LANDMARK
DOORS AND STORAGE SOLUTION

**Exclusive Canadian
Distributor**



ASTA AMERICA®

BY JANUS INTERNATIONAL

ROLLING
FIRE SHUTTER

550
SERIES

FOUR FINISH OPTIONS:

- White Topcoat
- Gray Topcoat
- Tan Topcoat
- Stainless Steel / 22-gauge, # 4 finish

*Powder Coat Finish is available
in a variety of color options*

40-year film integrity and a 35-year
no-chalk/no-fade limited paint warranty.

STANDARD FEATURES:

- 22-gauge flat slats with 1-1/2" high profile
- Steel endlocks
- Enclosed hood
- U.L. approved
- Fusible links
- Bottom weather seal
- 2-Year limited warranty

ASTA AMERICA 550 SERIES ROLLING FIRE SHUTTER is manufactured with U.L. fire ratings and is a cost effective way of protecting property in case of a fire, while increasing building safety for occupants. The **550 Series** is manufactured to the highest standards featuring, space saving designs and user-friendly operation. The fail-safe operating system is activated by fusible links, smoke detectors or can be wired to a central alarm system by one of our release devices. The **550 Series Rolling Fire Shutter** is the perfect choice for pharmacies, cafeterias, concession areas, ticket counters, nurse/hospital desks, and many more applications where a fire rated wall exists.



OPTIONS

Fire rating: Available in 3/4 hour and 1-1/2 hour.

Sizes: Up to 12'- 0" wide x 8'- 0" high.

Operation: Push-up and hand crank available on all sizes.

Locking: Slide lock is standard.

Weather Seal: U.L. rated jamb brush seal and flame baffle.

www.landmarkdoorsandstoragesolution.ca



550 SERIES ROLLING FIRE SHUTTER

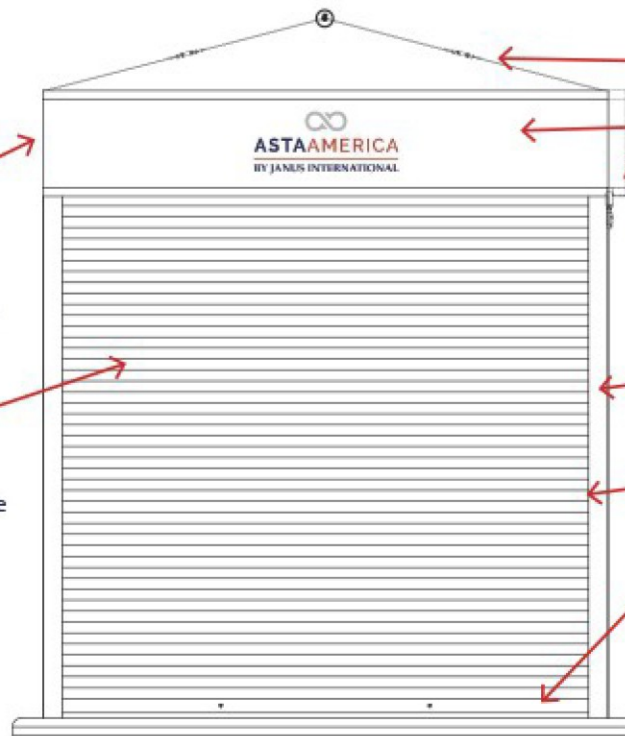
MODEL 550 (22-GAUGE STEEL), MODEL 550S (STAINLESS 22-GAUGE)

Activation System | Activated by the melting of 165° fusible links, smoke detectors, or the building's fire alarm system when installed with one of our release devices.

Drum/Axle Assembly | Barrel fabricated from minimum 4-1/2" O.D. pipe, with 1" tension and drive shaft and provided with lugs welded to barrel for curtain assembly. Springs to be oil tempered grease packed helical torsion type.

Slats | 1-1/2" flat slat 22-gauge galvanized steel with baked on epoxy primer and super durable polyester topcoat in white, gray, tan, or 22-gauge stainless steel.

U. L. Labeled | 45-minute or 90-minute approved Fire Shutter to be installed on approved sheetrock, steel or masonry walls.



Fusible Links

Hoods | 22-gauge steel with galvanized steel with baked epoxy primer and baked polyester topcoat on steel curtain or stainless-steel hood with stainless curtain.

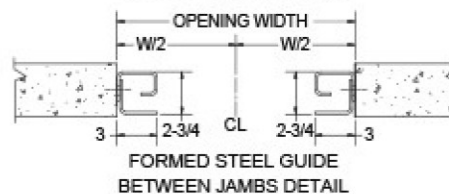
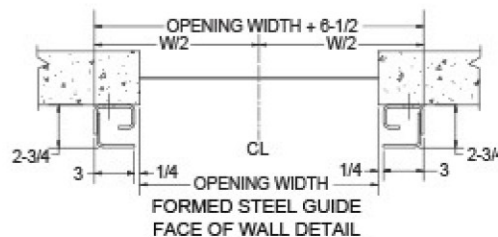
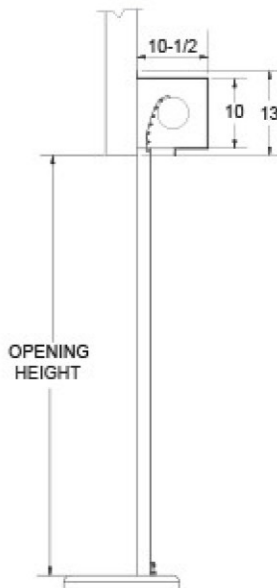
Operation | Manual push up standard up to 10'-4" wide, wider doors crank operation is standard.

Guides | Boxed shaped steel guides for steel doors and curtain stops or stainless steel with stainless steel doors.

Endlocks | Steel endlocks each end of alternate slats.

Bottom Bar | Steel angle bottom bar standard on steel doors, stainless steel angle is standard with stainless steel doors. Both come with astragal.

SPECIFICATION DETAILS



22 GAUGE STEEL FLAT SLAT



22 GAUGE STAINLESS STEEL FLAT SLAT

Standard Features:

550 SERIES	Curtain	Color	Guides	Bottom Bar	Hood
Model 552	22-Gauge Galvanized Steel	White, Gray, and Tan	Steel	Steel	24-Gauge Steel
Model 552S	22-Gauge Stainless Steel	#4 Finish	Stainless Steel	Stainless Steel	Stainless Steel

ASTA AMERICA reserves the right to change engineering specifications without prior notice. Illustrations shown are for general reference and should be verified for construction purposes.

www.landmarkdoorsandstoragesolution.ca

